



Global Centre for Modern Ageing[®]

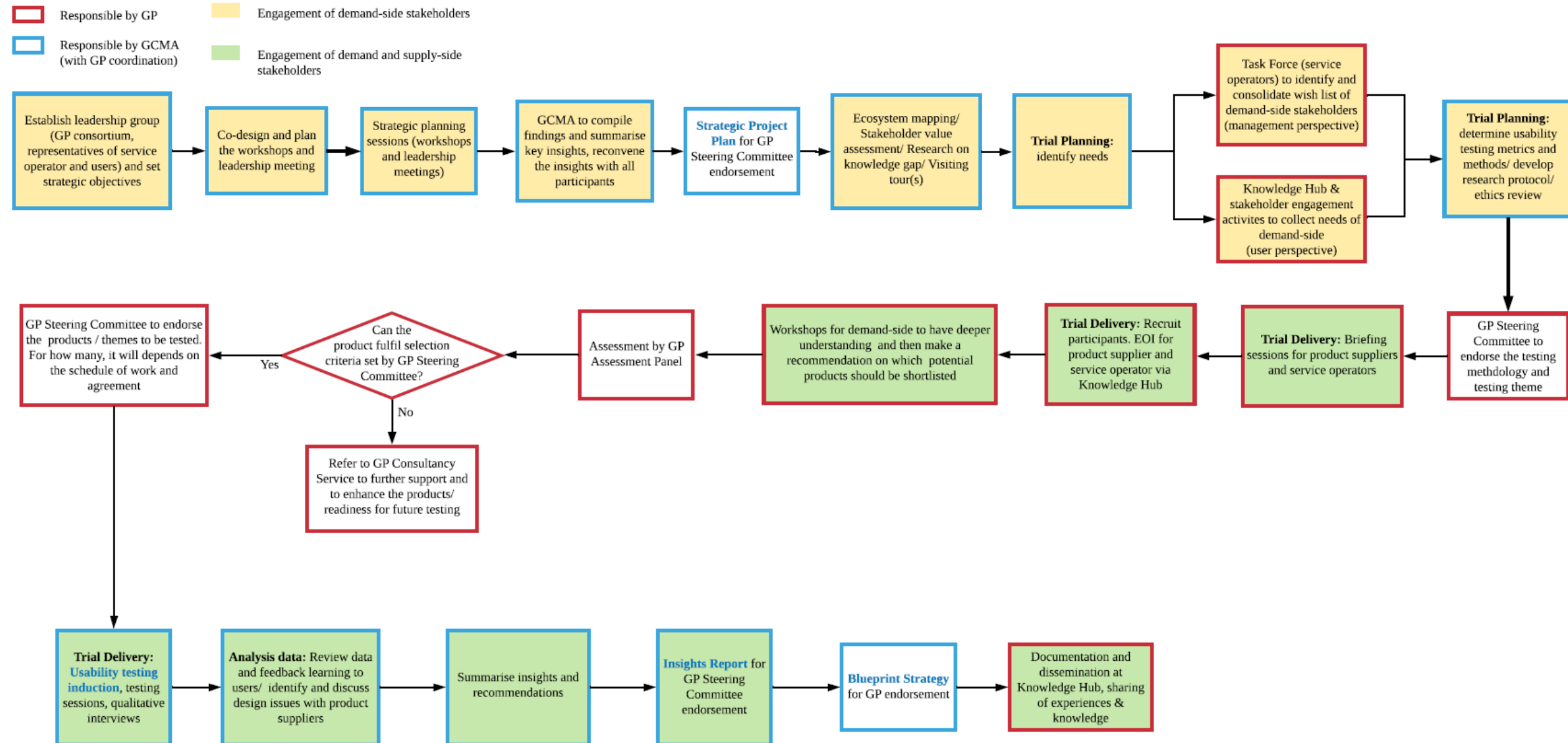
Julianne Parkinson

Chief Executive Officer, The Global Centre for Modern Ageing

www.gcma.net.au



Roles in Testing Ground



Phase Overview

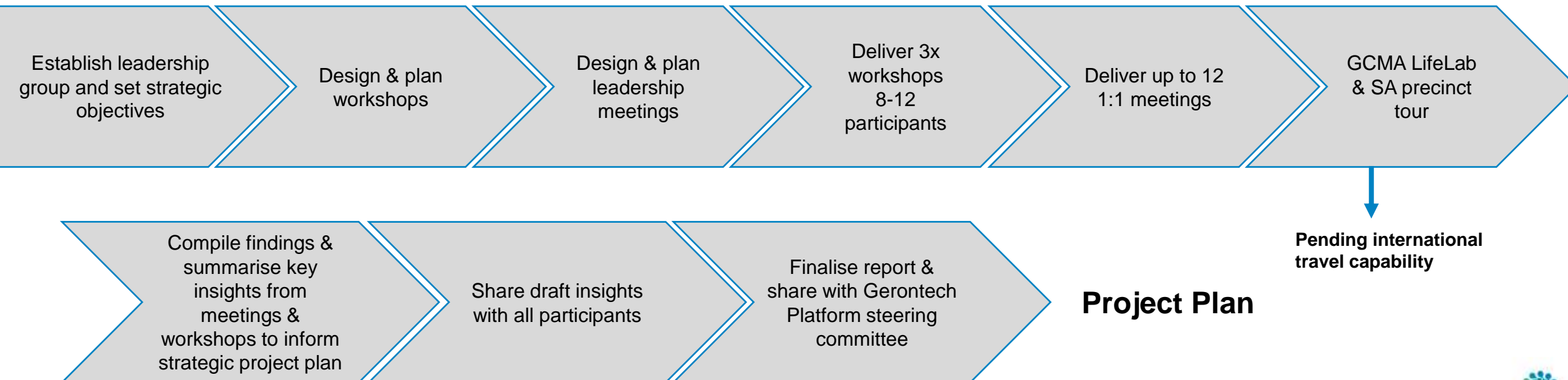


Phase 1: Co-designing strategic project plan

GCMA facilitated workshops and leadership meetings & GCMA LifeLab Tour

Discussion of interlinkages, LifeLab briefing, global insights and lessons learnt with carefully curate list of participants.

To be delivered in person and/or digitally



Phase Overview



Phase 2: Development of Blueprint Strategy

The Blueprint Strategy will be informed through a series of research activities, as detailed below.

To be delivered in person and/or digitally



Key Impact Assessment Concepts: Example



Output

- Identification of a suitable mobility aid that has been tested through the GTP Living Lab

Outcome

- Increase in mobility and independence for elderly ageing in-home in Hong Kong

Impact

- Increase in well-being and community building for elderly ageing in-home

Effectiveness

- Positive view of the GTP Living Lab and eagerness to join GTP and use of Living Lab for testing



Global Centre for Modern Ageing

gcma.net.au

Global Centre for Modern Ageing Limited
1284 South Road, MAB Eastern Promenade, MAB Tenancy E11
Tonsley, South Australia 5042 Australia
T +61 8 6117 5510 E info@gcma.net.au



@ModernAgeing



@Global Centre for Modern Ageing



@ModernAgeing